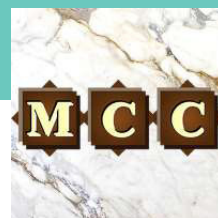


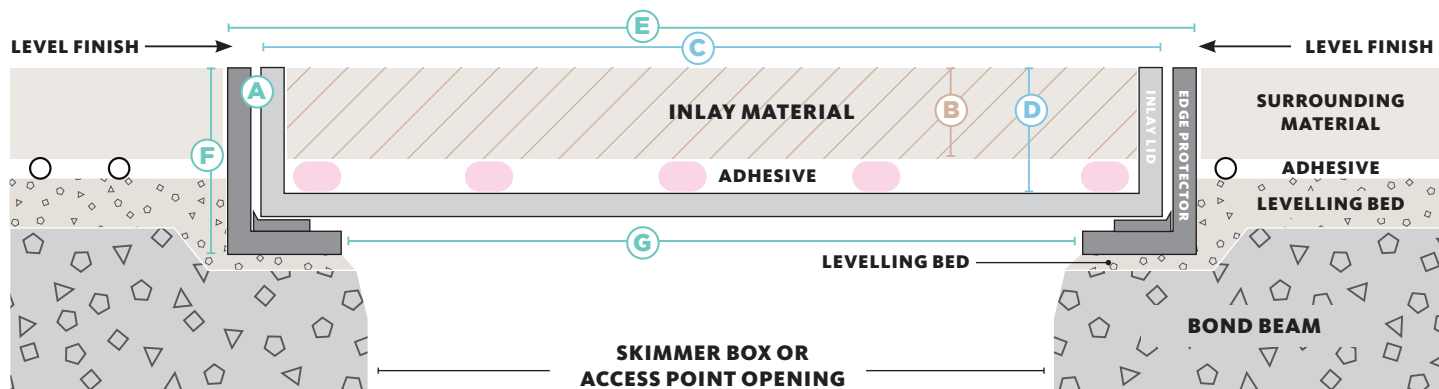


# HIDE KIT SERIES

## SKIMMER LID AND ACCESS COVERS



### CROSS SECTION VIEW OF COMPLETED SKIMMER LID INSTALL



HIDE KIT	MATERIAL THICKNESS	INLAY LID		EDGE PROTECTOR FRAME		
PRODUCT ORDER CODE	mm	SIZE	INTERNAL DEPTH	SIZE	EXTERNAL DEPTH	UNDERSIDE OPENING
A	B	C	D	E	F	G

#### 306mm Skimmer and Access Cover Kit

HSL306-10	8-11	300 sq.	12	306 sq.	23	252 sq.
HSL306-20	15-22		23		33	
HSL306-30	25-32		33		43	
HSL306-40	35-42		43		53	
HSL306-50	45-52		53		63	
HSL306-60	55-62		63		73	

#### 342mm Skimmer and Access Cover Kit

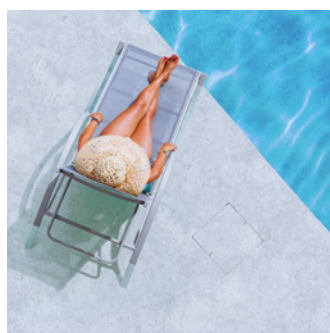
HSL342-10	8-11	336 sq.	12	342 sq.	23	288 sq.
HSL342-15	12-16		18		28	
HSL342-20	15-22		23		33	
HSL342-30	25-32		33		43	
HSL342-40	35-42		43		53	
HSL342-50	45-52		53		63	
HSL342-60	55-62		63		73	



Marble & Ceramic Corp



SKIMMER BOX COVERS



CONCRETE WET-POUR



ACCESS COVERS



DRAIN COVERS

HIDE products are recommended for use in pedestrian traffic areas only.



# HIDE KIT SERIES

## SKIMMER LID



ELEGANT  
FINISH



HIGH  
GRADE



EASY  
INSTALL



10 YEAR  
WARRANTY



POOL  
SAFE

### HIDE SKIMMER LID KIT INCLUDES

#### SAFETY KEY

A 316L marine grade stainless steel tool, to enable the installed HIDE cover to be safely and easily opened and closed.

#### HEIGHT ADJUSTER

Used only when additional height is required. Provides 2mm extra height if inlay material is not thick enough to achieve a flush finish with the top of the Inlay Cover.

#### INLAY LID

A 316L marine grade stainless steel tray which holds the inlay (landscape) materials you've chosen, for example, tile, paver, concrete or decking.

#### EDGE PROTECTOR

A 316L marine grade stainless steel frame inserted into a recess within the landscaped area. It protects the coping/surrounds from chipping/breakage when the Inlay Cover is opened/closed.

#### ADHESIVE AND DOCUMENTATION

A one-part adhesive specially developed for a long-term fitting of natural stone and porcelain tiles into the HIDE Inlay Series. Documents consist of comprehensive contractor installation instructions, homeowners warranty and manual.

#### NO ACID / CHEMICAL WASH

ACID and chemical washes will cause discolouration and/or rusting on the stainless steel HIDE components. Acid or chemical contact will void the HIDE warranty.

All HIDE Products are protected by International Patent Applications



Marble & Ceramic Corp

#### Sydney:

33-35 Green Street, Banksmeadow NSW 2019  
Tel: (02) 9666 3800

#### Melbourne:

2/1667-1669 Centre Road, Springvale VIC 3171  
Tel: (03) 9558 4000